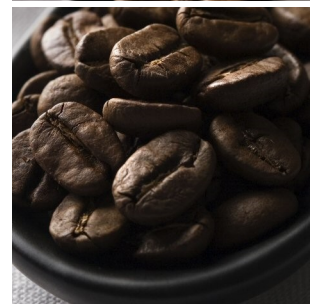
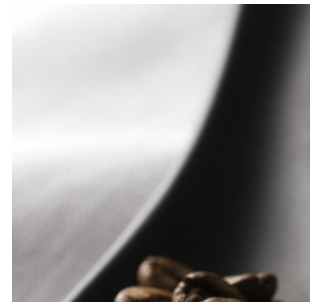


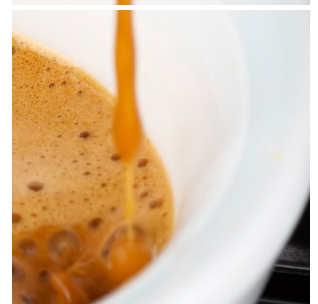
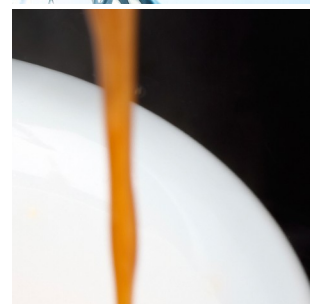
# Nio 20.2 FM [a] CoEx® bean2cup Fresh Milk



Product



Information



reddot award 2014  
winner

## Key features

- Visible beans & ingredient canisters
- Fresh Milk from external 4 Liter fridge
- Illuminated ingredient canisters
- CoEx® brewer & 2 whole bean grinder
- 10.4" high res full color touch screen
- Keyless cleaning & operation
- Separate hot water outlet & Cupsensor

## Options

- Branding and/or customized colors
- On-screen communication options
- Connect.Me® [online monitoring]
- Base cabinet [with condiment trays]
- Increased capacities
- Waste guide & drain
- Table between base and machine

# Nio 20.2 FM [a] CoEx® bean2cup Fresh Milk



## Dimensions

|              | mm    |
|--------------|-------|
| Machine      | h 599 |
|              | w 460 |
|              | d 540 |
| Base Cabinet | h 850 |
|              | w 460 |
|              | d 540 |
| Weight       | 35 kg |

## Specifications

- MoVeC-ICEq® & USB upload
- 10,4" resolution : 800x600
- User Interface : DJD/Nio
- Menu structure or direct start
- Cleaning pill entrance
- Multiple languages possible
- Cup-sensors
- Strength selections menus
- Number selection
- External Milk fridge 4 Liter
- Boiler : 2x 0.4L
- Pressure : max 12 Bar

## Connections

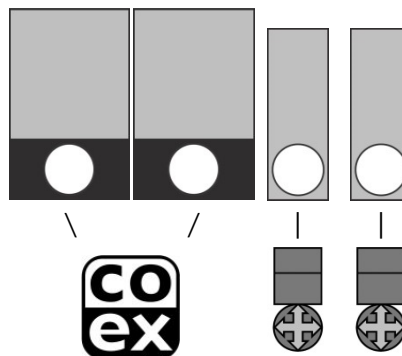
- 220-240 Volt AC
- 50/60 Hz
- 3350 Watt
- ¾" BSP [15 mm] mains
- waterfilter & waterlock recommended
- USB [outside access]
- LAN or Wifi

## Selections

|                              |                    |
|------------------------------|--------------------|
| Whole Bean Coffee            | Hot Chocolate      |
| Espresso                     | Chocomilk          |
| Double Espresso              | Espresschoc        |
| Whole Bean Coffee II         | Cappuccino [FM]    |
| Espresso II                  | Cappuccino II [FM] |
| Double Espresso II           | Cafe au Lait       |
| Macchiato [FM]               | Cafe Latte [FM]    |
| Customized recipes **        |                    |
| Chilled [sparkling] water ** | Hot water          |

\*\* optional, ask for details & conditions

## Canisters



## Capacities

|  | # | Size | Gram | Cups  |
|--|---|------|------|-------|
| Whole Bean Coffee I                    | 1 | NBC  | 1100 | 150   |
| Whole Bean Coffee II                   | 2 | NBC  | 1100 | 150   |
| Chocolate                              | 3 | 63   | 1260 | 55    |
| Milktopping                            | 4 | 63   | 810  | 160   |
| Fresh Milk [external fridge]           |   |      |      | 4 L   |
| Waste bucket [accessible from outside] |   |      |      | ≥ 100 |

Number of cups may vary depending on settings

