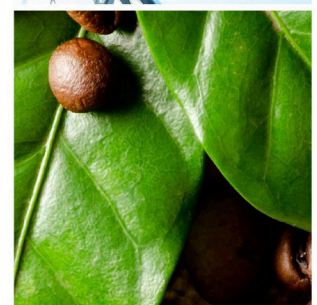
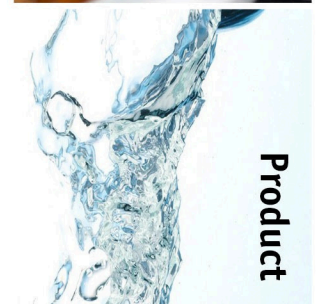
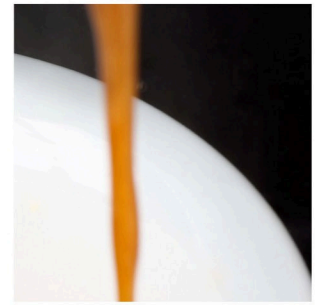


Virtu 92|36 [aL] CoEx® bean2cup



Key features

- CoEx® brewer & whole bean grinder
- Enlarged bean canister
- 10.4" full color touch screen
- User friendly interface
- Vivinox stainless steel front
- Outlet indication
- Cup sensor

Options

- Front branding
- On-screen communication options
- Connect.Me® (Online monitoring)
- Double cupstand
- Base cabinet with condiment trays
- Waste guide

Virtu 92|36 [aL] CoEx® bean2cup



Dimensions inch

Machine h* 35.25

*Bean Canister Extension
will rise above the cabinet
Effective Height 40.25"

w 16.9

d 21.1

Base Cabinet h 33.5

w 16.9

d 21.1

Weight 120 lb

Minimum height needed for complete
access with top door open 46"

Specifications

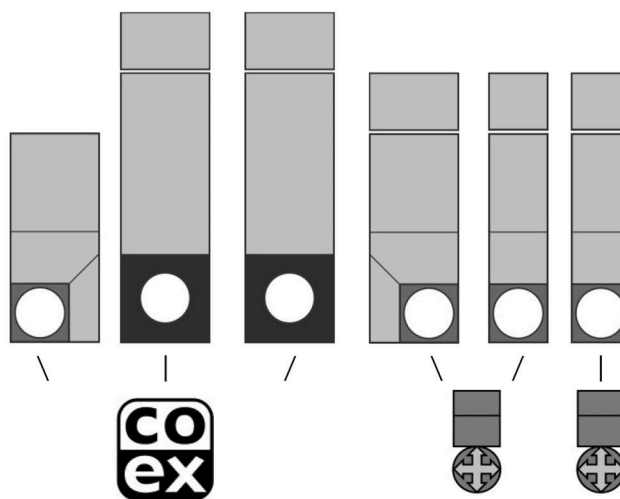
- MoVeC-ICEq® & USB upload
- 10,4" full color touch screen
- User Interface : DJD/Scope
- Menu structure for selections
- Direct start optional
- Multiple languages possible
- Cup-sensor
- Strength selections menu's
- Number selections
- Connection for payment systems [MDB]
- Boiler 1x 0.4L, + 1x 5L

Selections

Whole bean coffee I	Hot Chocolate
Whole bean coffee II	Chocomilk
Espresso I	Espresshoc
Double Espresso I	Cappuccino I
Espresso II	Cappuccino II
Double Espresso II	French Vanilla
Decaf Coffee	Decaf Cappuccino
Decaf Espresso	Hot water
	Jug Selections

** optional, ask for details & conditions

Canisters



Connections

- 100-120 Volt AC
- 50/60 Hz
- 1200 Watt
- 10-16Amp
- ¾" [15 mm] BSP
- waterfilter & waterlock recommended
- LAN or Wifi

Capacities

	#	Size	lbs	Cups
Whole bean Coffee I	1	BCE	4.4	270
Whole bean Coffee II	2	BCE	4.4	270
Chocolate	3	90E	5.73	130
Milktopping	4	60E	2.43	180
French Vanilla	5	60E	3.64	80
Decaf Coffee	6	90	1.9	125

Waste bucket ≥ 175

(# cups may vary depending on settings)

